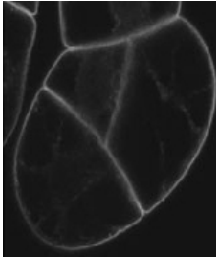
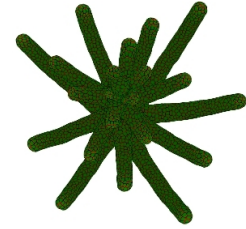
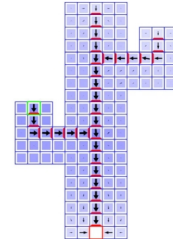


Modeling Plant Morphogenesis and Growth, in “New Trends in the Physics and Mechanics of Biological Systems: Lecture Notes of the Les Houches Summer School: Volume 92, July 2009”, copyright © Oxford University Press, 2011 ([preprint](#))



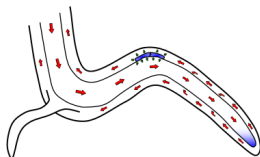
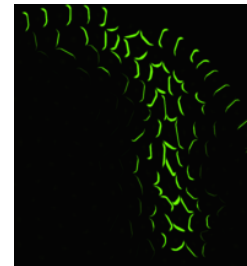
2010 Martina Laňková, M, Smith, RS, Pešek, B, Kubeš, M, Zažímalová, E, Petrášek, J, Hoyerová, K. Auxin influx inhibitors 1-NOA, 2-NOA, and CHPAA interfere with membrane dynamics in tobacco cells. [Journal of Experimental Botany](#) (published online July 1, 2010)

2009 Prusinkiewicz, P, Crawford, S, Smith, RS, Ljung, K, Bennett, T, Ongaro, V, Leyser, O. Control of bud activation by an auxin transport switch, [Proceedings of the National Academy of Science of USA](#). 106(41) 17431-17436.



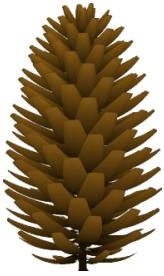
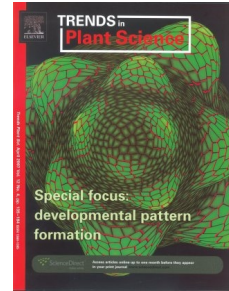
2009 Smith, RS, and Bayer, EM. Auxin transport-feedback models of patterning in plants. [Plant Cell and Environment](#), 32(9) 1258.

2009 Bayer, EM, Smith, RS, Mandel, T, Nakayama, N, Sauer, M, Prusinkiewicz, P, and Kuhlemeier, C. Integration of transport-based models for phyllotaxis and midvein formation. [Genes and Development](#), 23:373-384.



2008 Smith, RS. The Role of Auxin Transport in Plant Patterning Mechanisms. [PLoS Biology](#), 6(12).

2007 Phyllotaxis simulation cover picture, [\*Trends in Plant Science\*, 12\(4\)](#).



2006 Smith, R.S., Kuhlemeier, C., Prusinkiewicz, P. Inhibition fields for phyllotactic pattern formation: a simulation study. [\*Canadian Journal of Botany\*, 84\(11\)](#).

2006 Smith, R.S., Guyomarç'h, S., Mandel, T., Reinhardt, D., Kuhlemeier, C., and Prusinkiewicz, P. A plausible model of phyllotaxis. [\*Proceedings of the National Academy of Science of USA\*, 103: 1301–1306](#).

