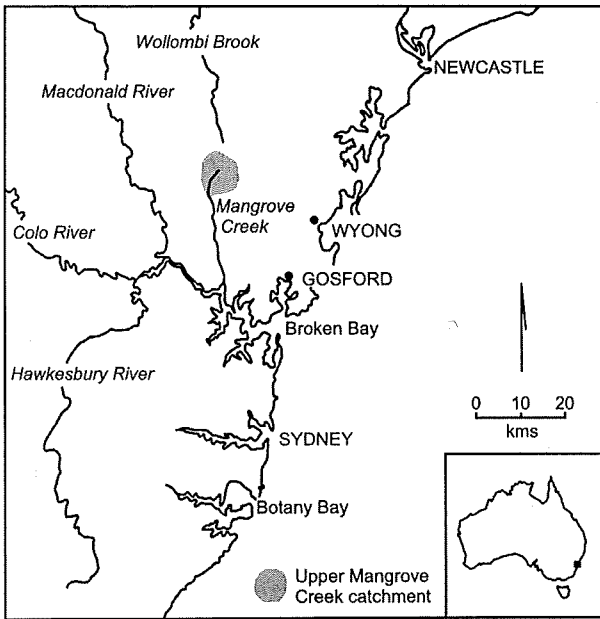
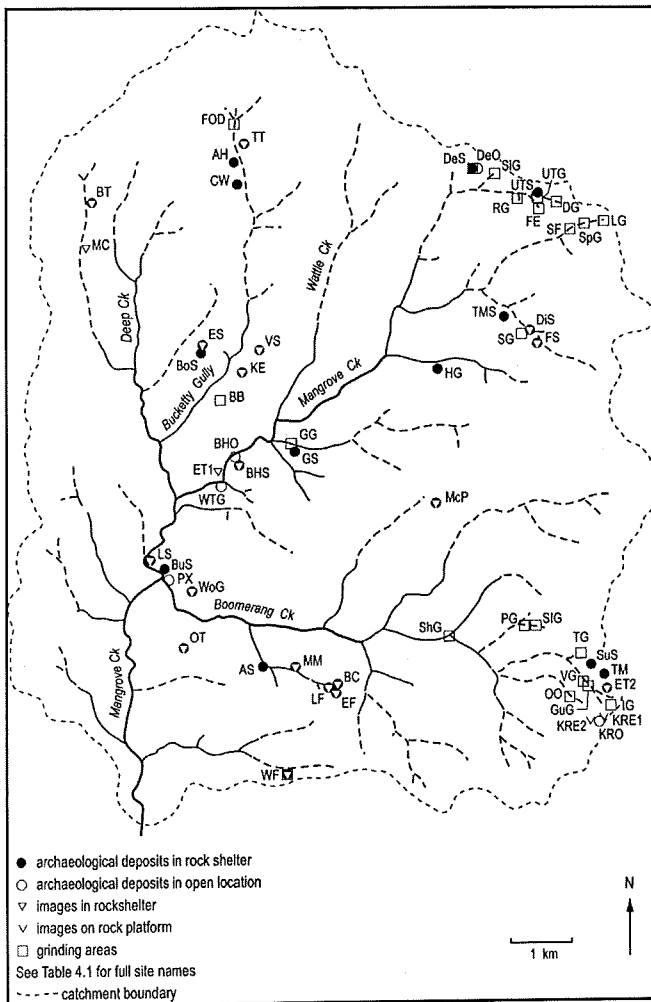


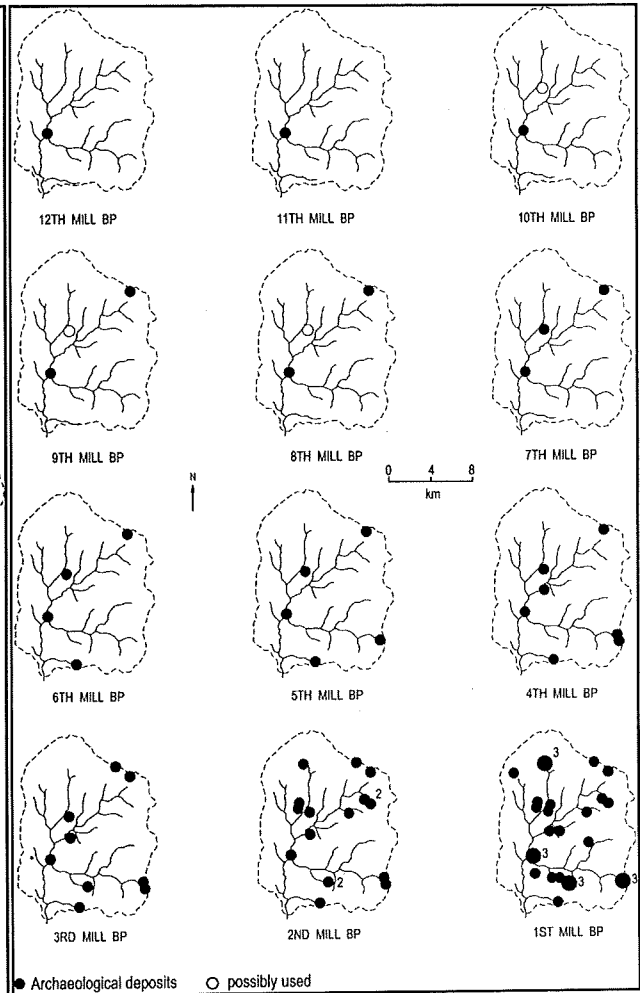
UPPER MANGROVE CREEK CATCHMENT, NSW CENTRAL COAST (Attenbrow 2004 *What's Changing*. Pandanus Books)



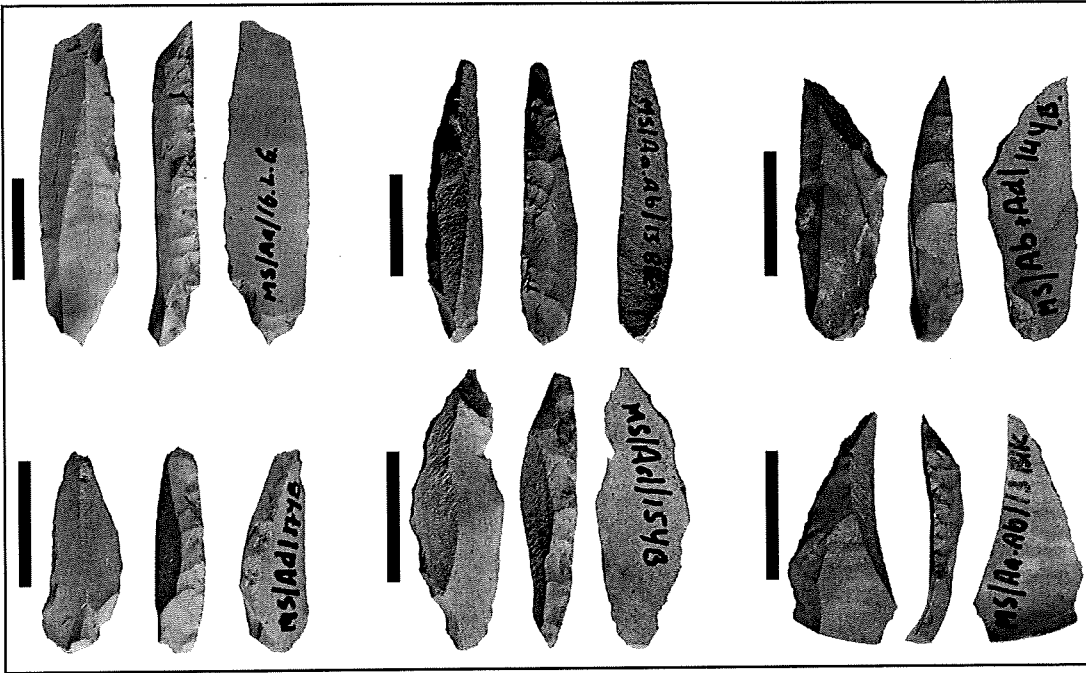
1. Location of Upper Mangrove Creek catchment.



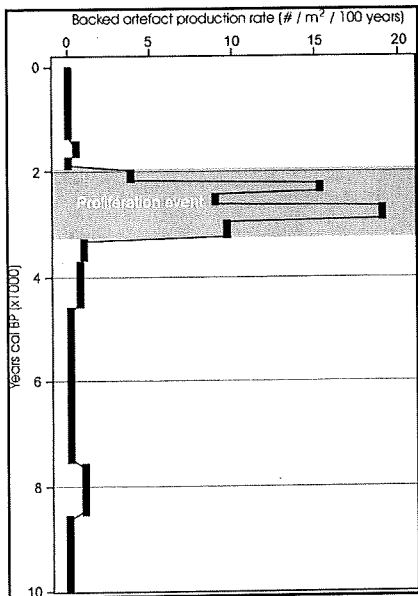
2. Archaeological sites recorded during random sample survey in Upper Mangrove Creek catchment



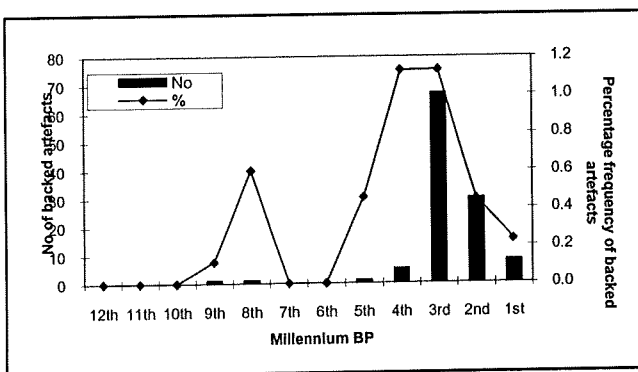
3. No of habitation sites established in each millennia



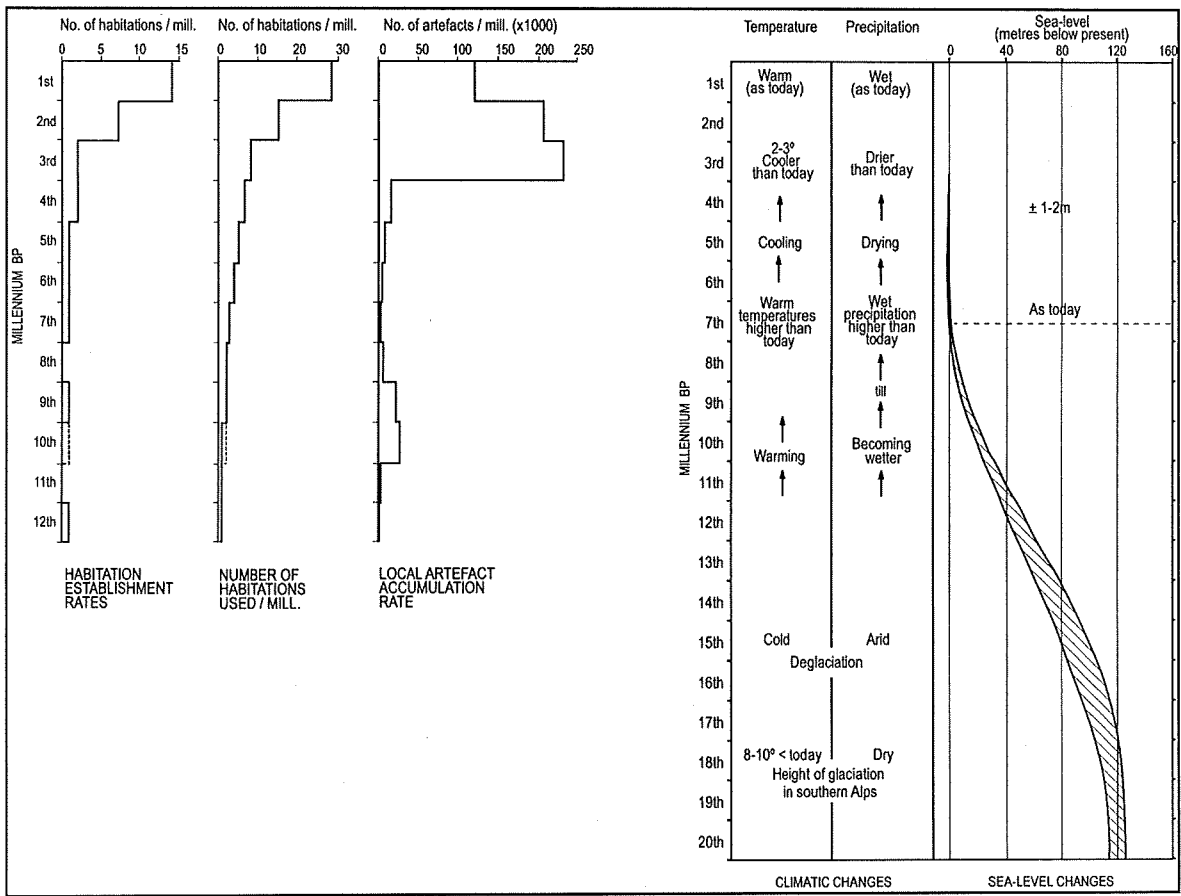
4. Examples of backed artefacts from Mussel Shelter (dorsal, backed margin, ventral views)



5. Trends in backed artefact production rate, showing proliferation between 3,500 and 2,000 CAL BP at Mussel

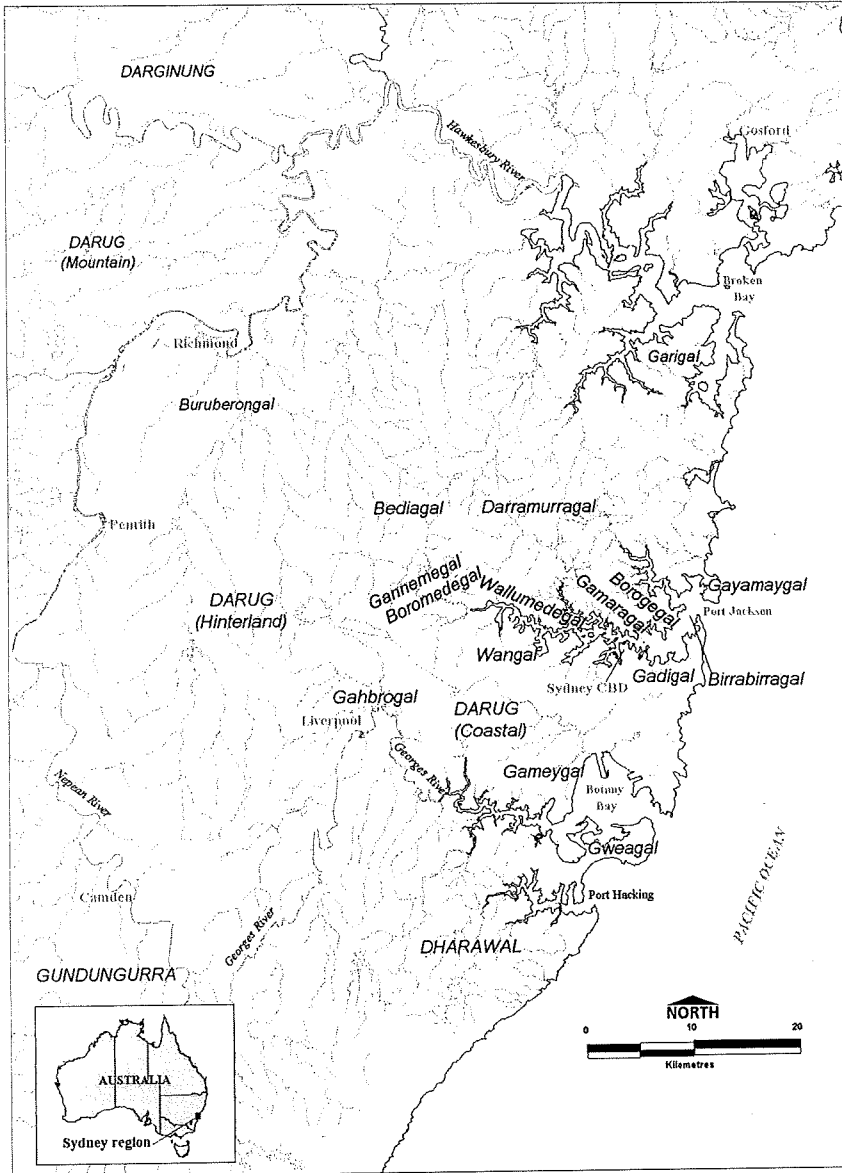


Shelter. 6. Trends in combined backed artefact production rate for all sites in Upper Mangrove Creek.

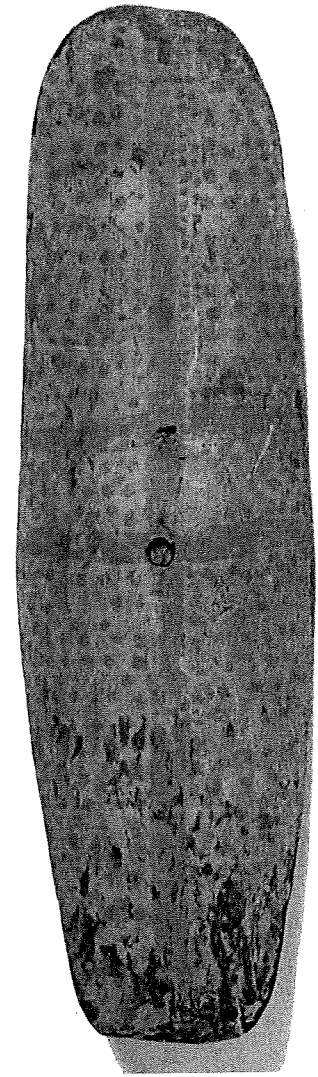


5. Trends in Habitation Establishment Rates, Number of Habitations used/millennium, and Local Artefact Accumulation Rate compared with Changes in climate and sea-levels

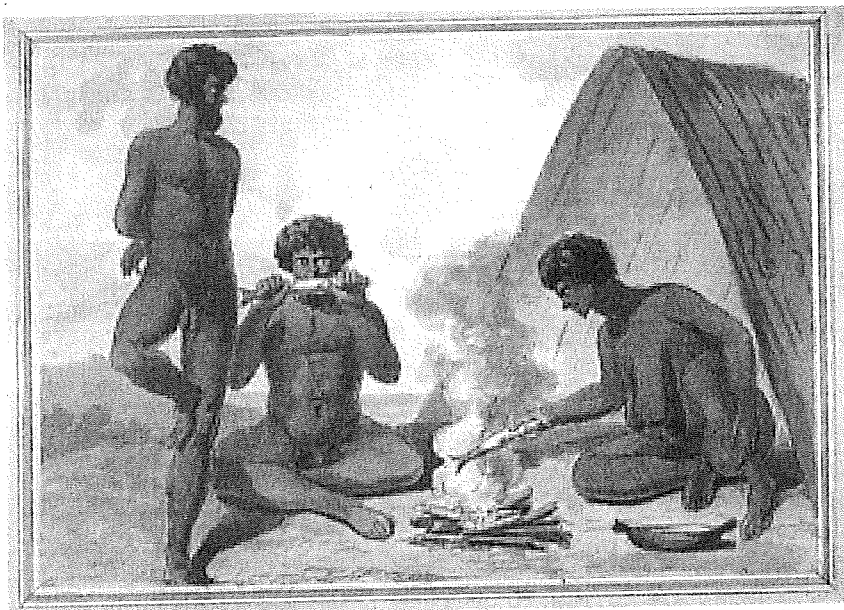
COASTAL SYDNEY: ABORIGINAL CLANS, CAMPSITES AND EQUIPMENT.
VAL ATTENBROW 2003 SYDNEY'S ABORIGINAL PAST, UNSW PRESS.



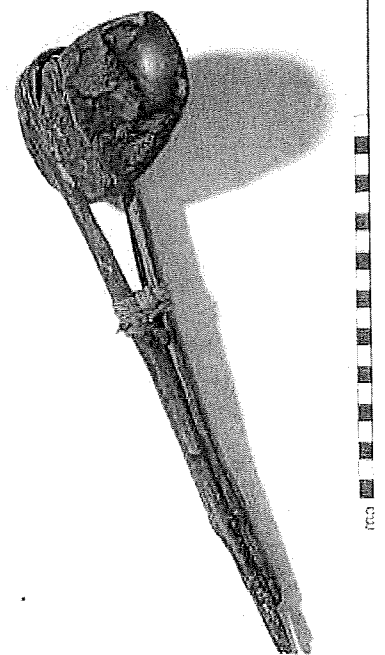
1. Aboriginal clans and language groups in the Sydney region (V. Attenbrow)



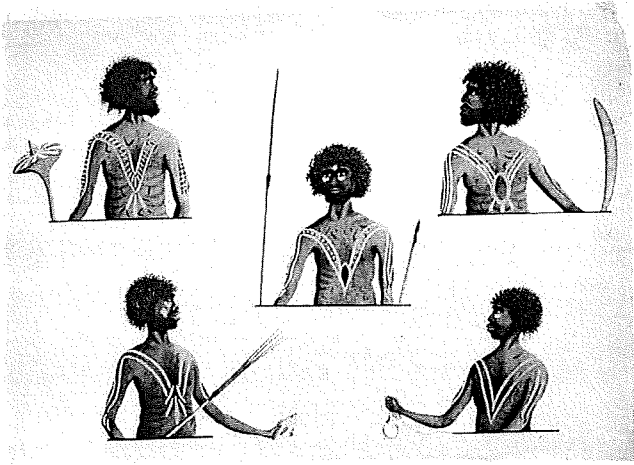
3. Shield attributed Sydney region (Australian Museum collection)



2. Unknown artist: Aborigines cooking and eating fish around a campfire



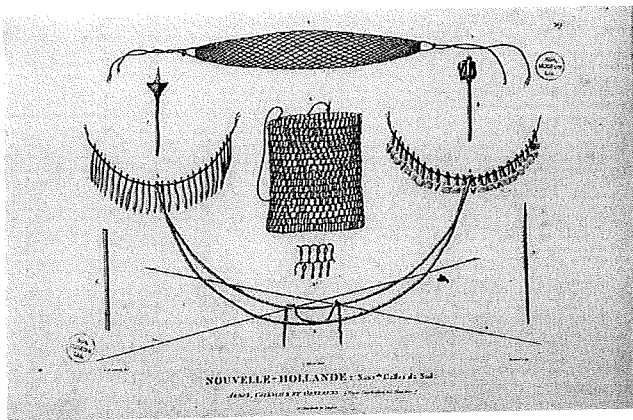
4. Hafted ground-edged hatchet (Australian Museum collection)



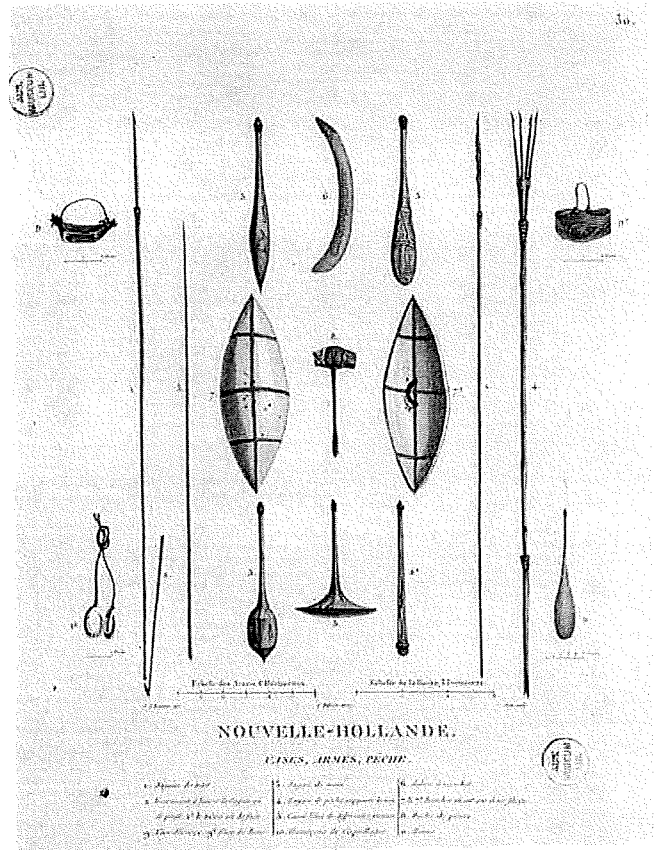
1. Port Jackson Painter 1788-95: Five half-length portraits



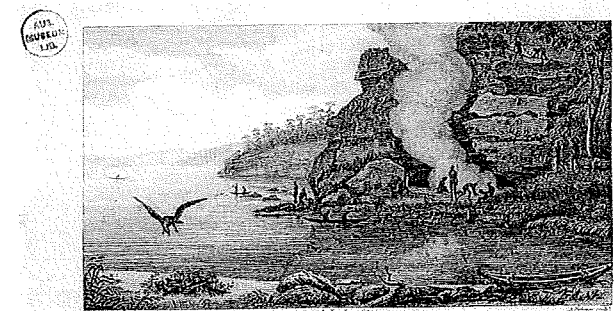
2. Peron & Freycinet 1824: Our-re-kine



3. Peron & Freycinet 1824: Weapons, Implements and Ornaments

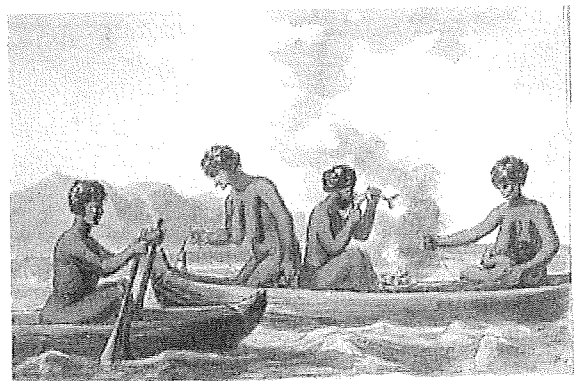


4. Peron & Freycinet 1824: Baskets, weapons and fishing gear



NOUVELLE-HOLLANDE: NOUVELLE-GUINEE DE NED.
Grottes, chasse et pêche des sauvages du Port-Jackson.

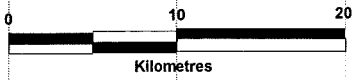
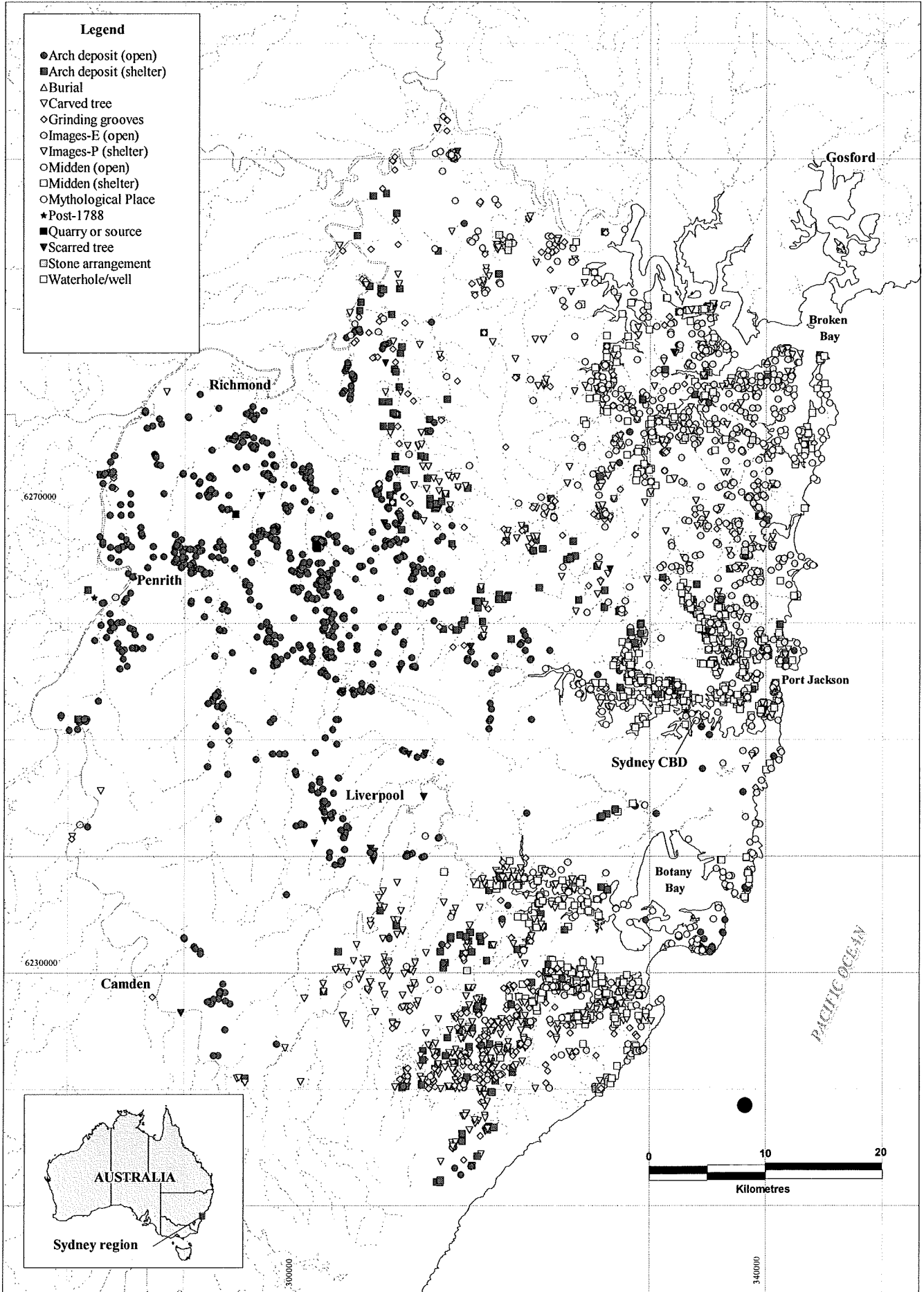
5. Peron & Freycinet 1824: Caves, hunting and fishing by the people of Port Jackson

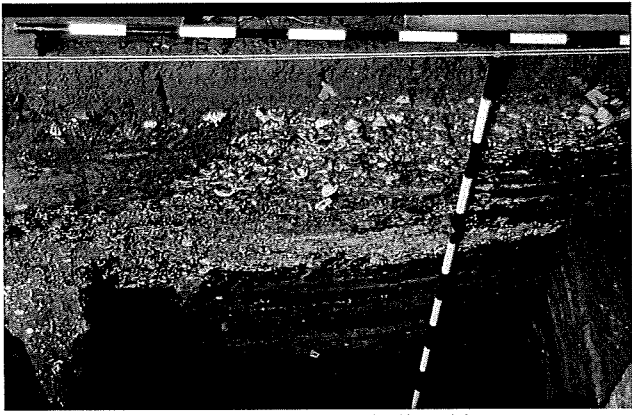


6. Unknown artist: Fishing, cooking eating in canoes

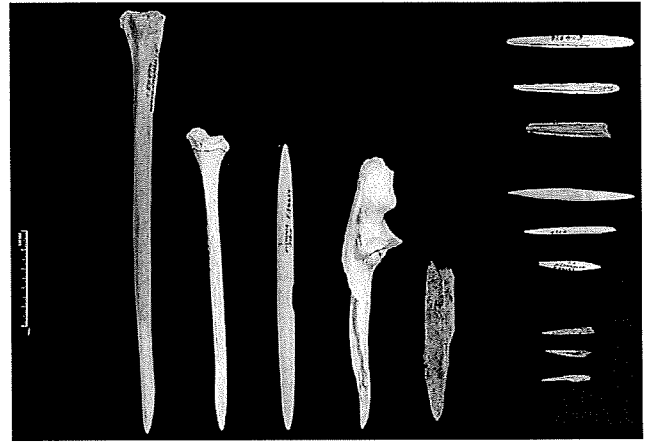
Legend

- Arch deposit (open)
- Arch deposit (shelter)
- △ Burial
- ▽ Carved tree
- ◇ Grinding grooves
- Images-E (open)
- ▽ Images-P (shelter)
- Midden (open)
- Midden (shelter)
- Mythological Place
- ★ Post-1788
- Quarry or source
- ▽ Scarred tree
- Stone arrangement
- Waterhole/well





1. Balmoral Beach shellmidden



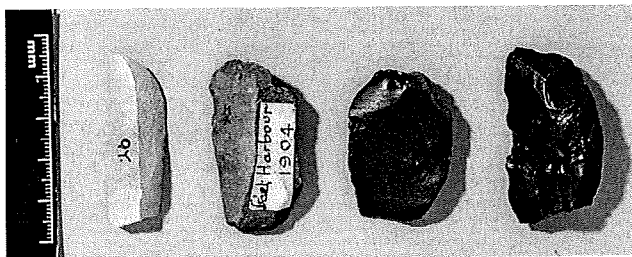
5. Bone implements (Australian Museum collection)



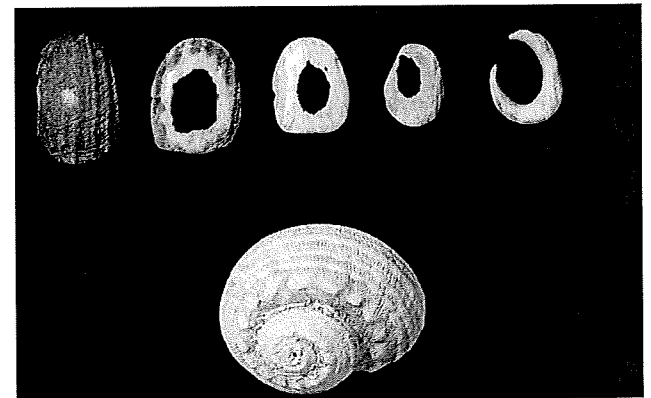
2. Boat Harbour shellmidden, Kurnell peninsula



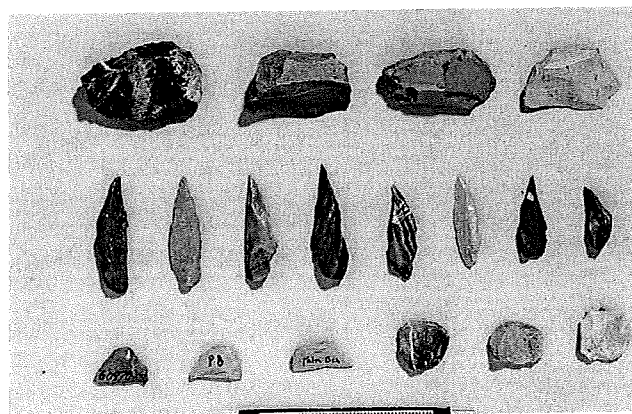
6. Shell fish-hooks (Australian Museum collection)



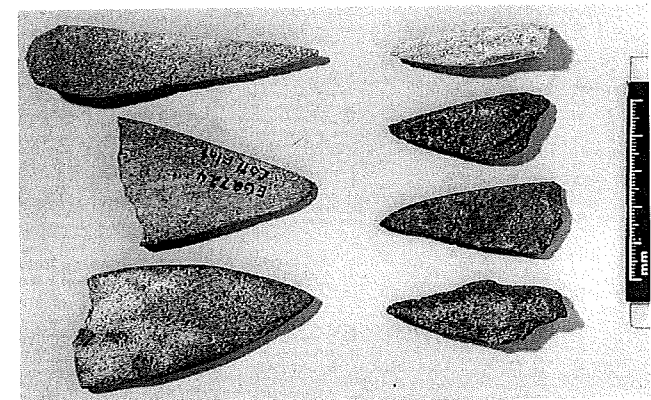
3. Stone flakes with retouch/use-wear (Australian Museum collection)



7. Sequence in making a shell fish-hook (Australian Museum collection)



4. Backed artefacts (stone) (Australian Museum collection)



8. Stone files used in making shell fish-hooks and other tools (Australian Museum collection)